

INSTALLATION INSTRUCTIONS

DESCRIPTION: Rear A-Arm Guard Kit
PART NUMBER: B57-F21A0-V0
MODEL: ~ '16 YXZ1000R



⚠ WARNING

Please read and understand these instructions completely before installation to avoid possible injury, or damage to the accessory or vehicle.

NOTICE:

This installation requires a torque wrench and should be performed by an authorized Yamaha dealer or other qualified technician.

WARRANTY INFORMATION:

Genuine Yamaha Accessories are covered by a one-year limited warranty against defects in material or workmanship. Labor for replacement of defective components is not covered. See your Yamaha dealer for a copy of the warranty statement.

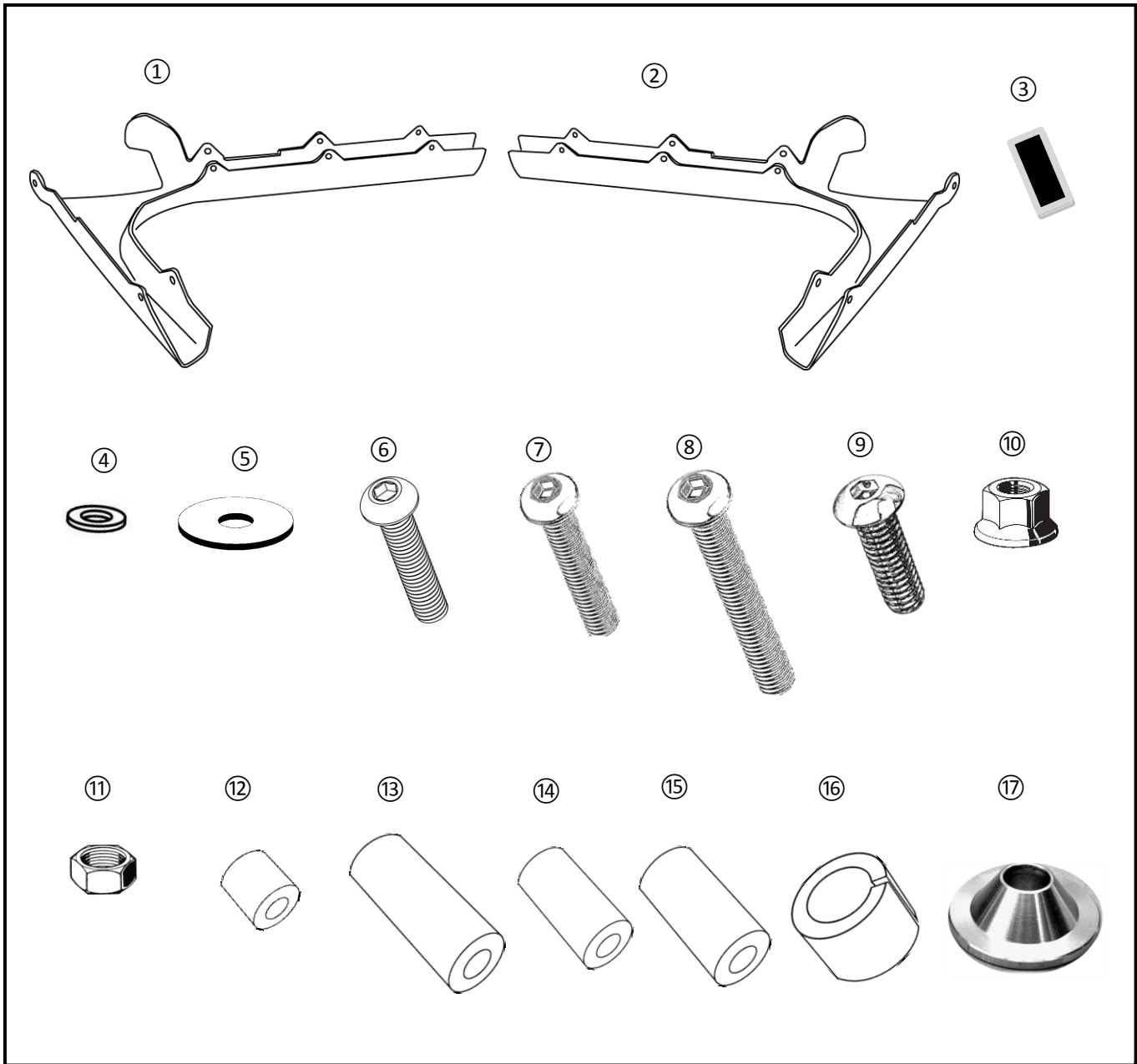
DEALER OR INSTALLER:

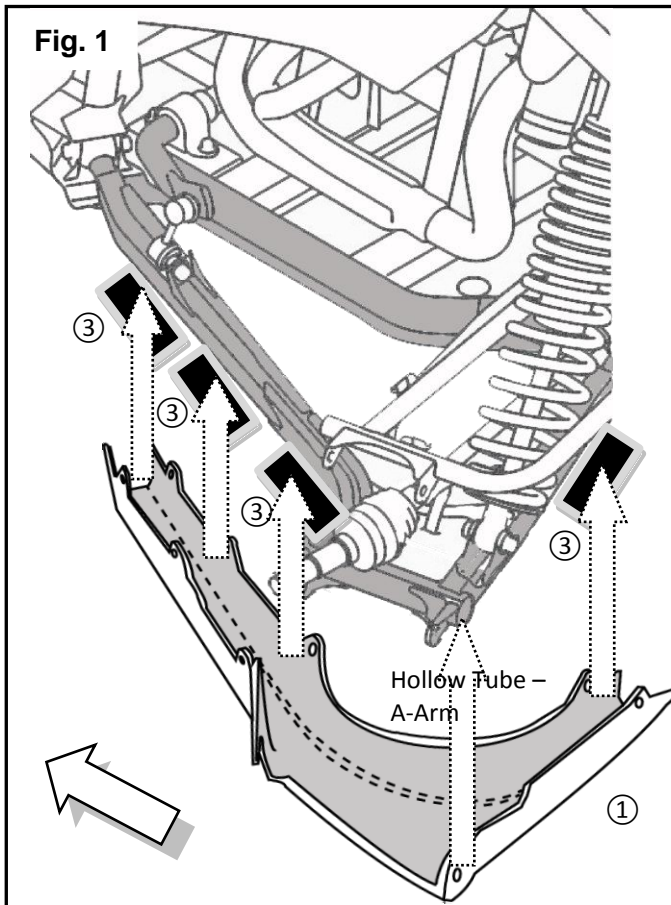
These instructions contain important information for future reference and *must* be given to the customer.

PARTS LIST:

No.	Part Number	Description	Qty
--	B57-F21A0-V0	Rear A-Arm Guard Kit	--
①	*	Left Guard	1
②	*	Right Guard	1
③	*	Rubber Pad	8
④	*	M8 Fender Washer	16
⑤	*	M10 Fender Washer	2
⑥	*	M8x55mm Button Head Bolt	2
⑦	*	M8x60mm Button Head Bolt	4
⑧	*	M8x70 Button Head Bolt	2
⑨	*	M10x60mm Button Head Bolt	2
⑩	*	M10 Hex Flange Head Lock Nut	2
⑪	*	M8 Hex Lock Nut	8
⑫	*	29.5mm Spool	2
⑬	*	44mm Spool	2
⑭	*	35.5mm Spool	2
⑮	*	37mm Spool	2
⑯	*	Inside Taper Bushing	2
⑰	*	Outside Flange Taper Bushing	2

* Part supplied with kit only and not available separately.



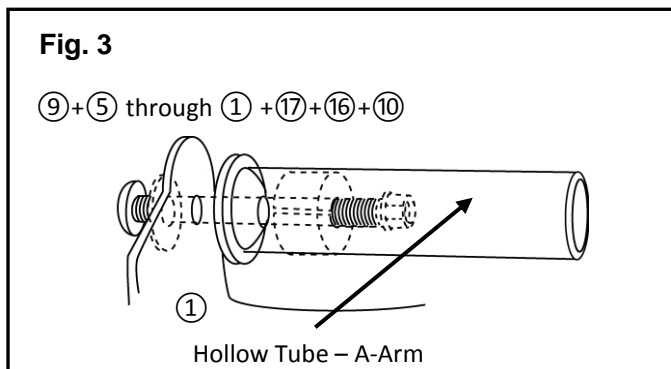
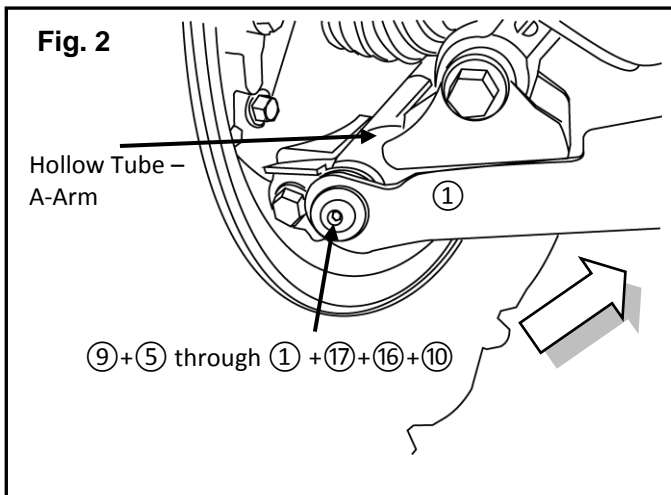


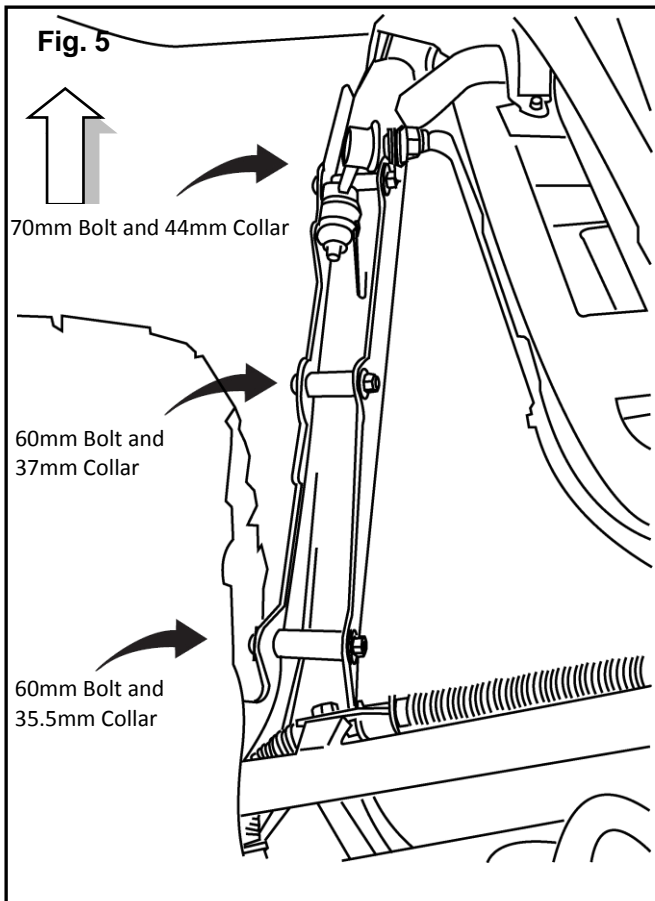
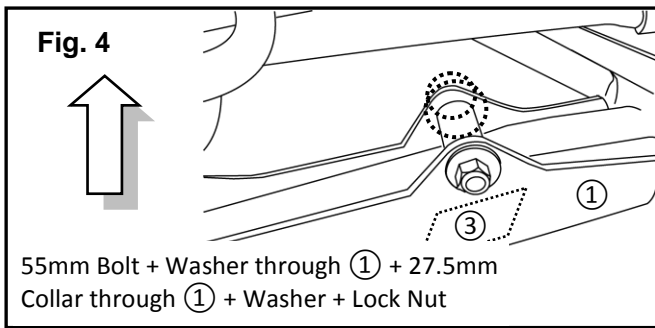
PREPARATION:

- Place the vehicle on a secure and level surface.
- Set the parking brake.
- Clean the rear A-arms before starting installation, taking note to clean the hollow tube in the a-arm.

INSTALLATION:

1. Raise and secure the rear end of the vehicle and remove the rear wheels.
2. Working from the left rear of the vehicle, test fit the Left Guard ①. (Fig. 1). Mark the locations of the 4 bolt mounts on the a-arm.
3. Peel the paper from the adhesive pad and install the 4 Rubber Pads ③ roughly where the 4 bolts will be installed – as shown in Fig. 1. The pads must be installed onto the bottom of the a-arm, not to the a-arm guard.
4. Collect the components used in the expander assembly. Button Head M10x60mm ⑧, M10 Fender Washer ⑤, Inside Taper Bushing ⑮, Outside Flange Taper Bushing ⑯, and M10 Hex Flange Head Nylock Nut ⑨.
5. Refer to Fig. 2 and Fig. 3 and begin to assemble the Expander Assembly. Put a Washer ⑤ on an M10x60mm Bolt ⑨. Pass the Bolt through the mount hole in the A-Arm guard. Then, on the inside of the A-Arm guard, Install an Outside Flange Taper Bushing ⑰ (flat side against the A-Arm Guard).
6. Work from the other end of the Hollow Tube – A-Arm. Insert the Inside Taper Bushing ⑮ to the Bolt ⑨. Use an extension with deep socket to thread an M10 Nylock nut ⑩ to the bolt end. Leave this snug but not tight to allow some movement.





7. There are 4 bolt/collar assemblies that secure the A-Arm Guard. All 4 are assembled as shown in Fig. 4. Figure 4 shows the 55mm bolt and 27.5mm collar installed on the short leg of the a-arm guard.

Note: There are 3 different bolt lengths and 4 different collar lengths. Each collar is sized for a specific location. See Fig. 5 for the locations of the remaining collars and bolts.

8. Repeat the process on the right side. The only difference is the Right Guard (part ②).
9. Torque M8 nuts to 11Nm (8 lbf-ft). Torque M10 Nuts to 35Nm (26 lbf-ft).

MAINTENANCE:

Periodically, check torque and tightness on all hardware. If loose hardware is found, re-torque or re-tighten.

CARE AND CLEANING:

Clean metal parts and the plastic A-Arm guards with a clean soft cloth and mild soap and water. Rinse and dry.

CUSTOMER SERVICE:

For further information see your Yamaha dealer.

ESTIMATED TIME TO INSTALL: 0.8 HR